



# RESEARCH CONNECT

Edition 6 | May 2026

## Acknowledgement of Country

The Office of the Inspector-General of Emergency Management would like to respectfully acknowledge First Nations peoples as the Traditional Owners and Custodians of Queensland.

We recognise their connection to land, sea and community. We pay our respect to them, cultures, and to their Elders, past and present.

## A message from the Inspector-General

Welcome to the sixth edition of Research Connect.

As we approach the second half of the year, I look back on the lessons provided so far by 2026. Namely, that the strength of Queensland's Disaster Management Arrangements (QDMA) lies not only in how we prepare for, respond to and recover from events, but also in how we learn and evolve together.

Disasters are ultimately managed at a system level, not by individual organisations operating in isolation. The most significant opportunities for learning and improvement are often found at the intersections between agencies; where decisions are shared, responsibilities overlap, and collective capability is stretched.

This reinforces the importance of fostering a more deliberate, system-wide approach to research and learning. This involves shifting from ad hoc, organisation-specific insights to a more mature, shared practice of learning that emphasises collaboration, consistency, application, and continuous improvement.

Looking ahead, we will continue to strengthen the connections between research, policy and practice, while investing in better ways to share and apply lessons across the disaster management sector. This approach will build and support an increasingly adaptive, integrated and future-focused sector, delivering improved outcomes for Queensland communities.



## Save the date: 2026 Queensland Disaster Management Research Forum

The sixth annual [Queensland Disaster Management Research Forum](#) (Research Forum) will be held on **Tuesday 10 November 2026** at the Brisbane Convention and Exhibition Centre. Delivered as part of the Queensland Disaster Management Research Framework, the Research Forum supports collaboration and knowledge sharing between tertiary and disaster management

sectors.

This year the theme is “*Research outside the norm – challenging assumptions, methods, and boundaries through disruptive thinking with real-world impact.*”

Expressions of interest to present will open in July 2026. If you would like to join the forum working group or have any questions, please contact [research@igem.qld.gov.au](mailto:research@igem.qld.gov.au).

Email [research@igem.qld.gov.au](mailto:research@igem.qld.gov.au)

## Research engagement



Queensland is home to a network of universities leading a diverse range of research on disaster resilience, preparedness, response, recovery, and climate adaptation. Our Research team has been visiting universities across the state to strengthen strategic partnerships, support knowledge exchange, and showcase research through our [Research Connect](#) platform.

These engagements also support our role as a knowledge broker within the QDMA, helping to connect research with practice. By building stronger relationships between researchers and practitioners, our Research team aims to foster interdisciplinary collaboration and improve access to valuable insights that support enhanced disaster management outcomes.



We'd love to connect – [reach out](#) if you'd like to chat over Teams or coffee.

Let's connect

## New Research Connect case studies



### Advancing accessible emergency communication: Co-designing digital solutions for Deaf and Hard-of-Hearing communities in Queensland

Built *with*, not just for, communities, this research provides insights into co-designing smarter emergency communication for the Deaf and Hard-of-Hearing, ensuring that no one is left behind in a crisis.

Read more

### Creating a national database of unreinforced masonry buildings

What if we could pinpoint Australia's most earthquake vulnerable building before disaster strikes? Funded by [Natural Hazards Research Australia](#) and led by [Queensland University of Technology](#), this new case study strengthens emergency planning and preparedness, supporting continuous improvement in earthquake risk mitigation nationwide.

Read more

## Natural Hazards Research Australia update

A new report on the experiences of people affected by the 2022 – 2023 multi-state flood events provides vital insights about the information, communication and response at the local level. Published last month, the report outlines key lessons from those affected by flooding in South Australia, Victoria and South-Western New South Wales.

The [research](#) was conducted by [Natural Hazards Research Australia](#) in partnership with the [RMIT University](#), [Macquarie University](#) and [Monash University](#), as well as [South Australian SES](#), [Victoria SES](#) and [New South Wales SES](#). Researchers gathered firsthand accounts from people

affected by both sudden-onset and longer lead-time riverine flooding across these regions between August 2022 and March 2023.

Lead researcher, Dr Erica Kuligowski from RMIT University argues, “if there is one overarching lesson from this project, it is that disaster resilience is built long before the water arrives, and it depends on trust, inclusion and listening to the people who know their places best”.

Visit NHRA's [website](#) to read more insights from Dr Kuligowski about the research and to view the report.

[Learn more](#)

## Griffith University Griffith Institute for Human and Environmental Resilience

In February 2026, the Griffith Institute for Human and Environmental Resilience brought together government, industry and research partners to identify priorities for advancing climate resilient development and disaster resilience. The workshop highlighted the growing complexity of climate risk, the challenges of cross-sector coordination, and the need to better translate research into practical, real-world outcomes.

Key priority areas included resilient infrastructure, community preparedness, ecosystem resilience, and improved data and decision-support systems. Central to all discussions was the importance of strong, long-term partnerships and transdisciplinary approaches to deliver integrated, scalable solutions.

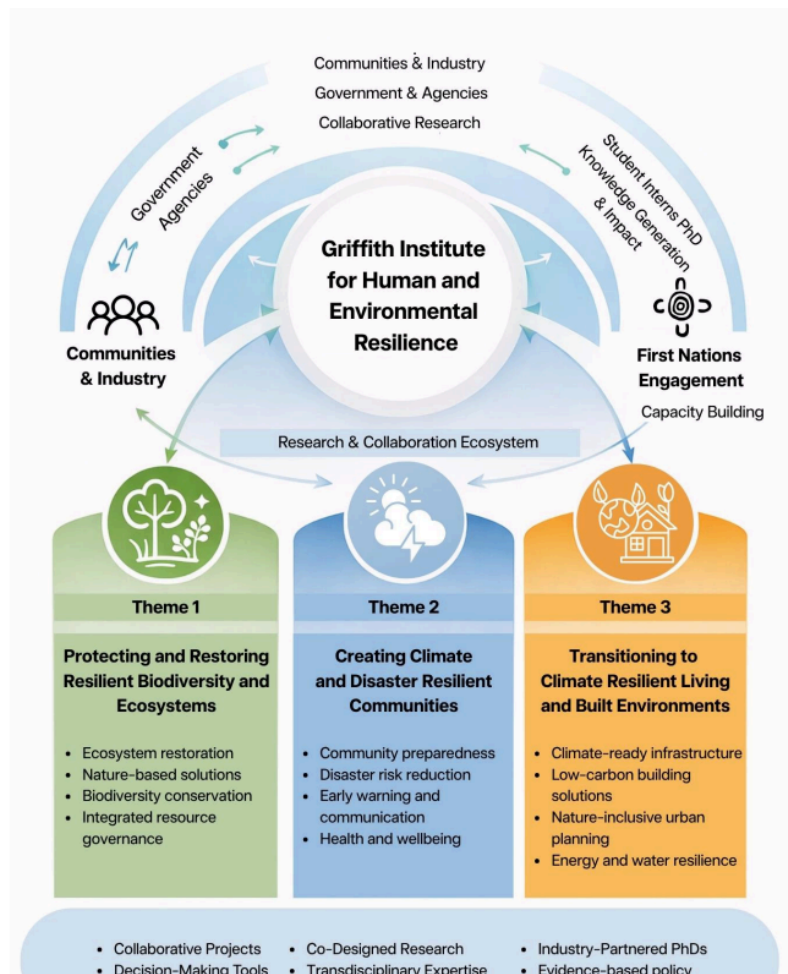


Figure 1. GIHER's research and collaboration model, illustrating the Institute's core themes and how it works with partners to deliver real world impact

The findings reinforce a shared commitment to moving from fragmented efforts to coordinated action; ensuring research and collaboration directly support safer, more resilient communities.

[Learn more](#)

# AFAC Seasonal Bushfire Outlook Autumn 2026



Figure 1. AFAC Seasonal Bushfire Outlook Autumn 2026. Areas are based on the interim biogeographic regionalisation for Australia and other geographical features.

The [AFAC](#) Seasonal Bushfire Outlook for autumn 2026 highlights an elevated fire risk across parts of New South Wales, Victoria and Western Australia. Areas of concern include Southern, Central and Eastern NSW, much of Victoria, and extending into parts of southeast South Australia.

AFAC Chief Executive Officer Rob Webb noted that prolonged dry conditions and ongoing soil moisture deficits are key drivers behind this increased risk. He explained that while autumn typically brings a gradual easing of fire conditions across southern Australia, along with more opportunities to carry out prescribed burns, these activities may be delayed in some regions due to persistent dry ground conditions. Mr Webb also emphasised that the outlook covers a three-month period, and although short-term rainfall is expected in the southeast, it will take substantially more rain to offset the long-standing moisture shortages.

[Read the full report](#)

## Upcoming events and opportunities

### CSIRO Kick-Start Program

[CSIRO Kick-Start](#) is an initiative for innovative Australian start-ups and small to medium enterprises, providing funding support and access to CSIRO's research expertise and capabilities to support the development of new products, services, or processes.

The program may be relevant to organisations in disaster resilience, emergency management, climate adaptation, and related sectors seeking to collaborate with research partners and accelerate innovation.

### Regional University Industry Collaboration Program

The [Regional University Industry Collaboration](#) program is designed exclusively for Queensland-based small to medium enterprises, providing support at every stage of their research and development journey. The program offers the skills, funding, expertise, and networks necessary to drive innovation across the state's regions.

Benefits of the program include:

- Access world-class CSIRO research expertise
- Share project costs through matched funding
- Advance prototypes, feasibility studies or product development

[Learn more](#)

### Resilient Australia Awards

The Resilient Australia Awards celebrate and promote initiatives that build whole-of-community resilience to disasters and emergencies around Australia, as well as capture and share examples of resilience in action. The awards recognise collaboration and innovative thinking across a broad range of sectors and contributions that strengthen disaster resilience with communities, institutions and the private sector. Submissions for jurisdictional award categories closes Tuesday 2 June 2026 and submissions for the national research for impact award close Friday 17 July 2026.

[Learn more](#)

### Australian Academy of Science Aboriginal and Torres Strait Islander Scientist Award 1 June 2026

Up to \$20,000 is available to support Australian and Torres Strait Islander PhD students and early-to-mid career scientists. The award supports research activity and opportunities to strengthen national and international research networks.

Applications should demonstrate strong cultural connectedness and deliver meaningful benefits for Aboriginal and Torres Strait Islander communities.

[Apply now](#)

[Learn more](#)

### Queensland Police Service Disaster Management Stakeholder Engagement Workshops round three

The Queensland Police Service (QPS) Doctrine and Guidelines team is delivering the Review and Renewal Program for Queensland's disaster management doctrine (plans and guidelines).

Since 2024, 41 stakeholder engagement workshops have been held across Queensland with over 795 participants attending. QPS warmly acknowledge and thank those who took the time to contribute. These workshops provided insights into the needs of disaster management professionals, and helped inform the review and renewal of the doctrine. Feedback has been documented and where able, incorporated it in the development of interim versions of the State Disaster Management Plan and the Disaster Management Guidelines. The interim versions are available on [www.disaster.qld.gov.au](http://www.disaster.qld.gov.au)

[Book a session near you](#)



### Natural Hazards Research Forum 10- 12 June 2026

Natural Hazards Research Australia will host the fifth annual Natural Hazard Research Forum 2026 at the National Wine Centre in Adelaide from 10 to 12 June 2026. The forum offers a unique opportunity to connect with leading research, reflect on lessons learned and discuss how innovation can support safer, more resilient and sustainable communities – now and into the future.

This year, there will be keynote speeches



**AusAlert**  
**National Emergency Management Agency**  
27 July 2026

AusAlert is a new national warning system designed to send emergency alerts to compatible mobile phones. It is being introduced in response to the [2020 Royal Commission into National Natural Disaster Arrangements](#), which emphasised the critical role of timely emergency warning systems, including mobile-based alerts.

A national test of the new emergency warning system will be sent out to compatible mobile phones on Monday 27 July 2026 at 2:00pm AEST (UTC+10:00).

[Learn more](#)



**Disaster Management Officer's Day**  
29 July 2026, Gold Coast, Queensland

The Disaster Management Officers' Day (DMO Day) is back in 2026 and will directly follow the Disaster & Emergency Management Conference.

DMO Day is dedicated to Disaster Management Officers (DMOs) from councils across the state. It provides an opportunity to connect, share knowledge, and discuss issues that matter to the DMO community.

If you are a DMO and would like to attend, register below! Please note this event is not open to the public.

[Register now](#)

from local leaders to global voices alike, featuring:

- Patrick Hetherington, Interim Coordinator-General, [National Emergency Management Agency](#)
- A/Prof Veronica Matthews, Leading First Nations rural health researcher, [University of Sydney Centre for Rural Health](#)
- Prof Saini Yang, Executive Director, [Integrated Research on Disaster Risk](#)
- Dr Faraz Hedayati, Lead Research Engineer, [Insurance Institute for Business and Home Safety](#)

[Read more](#)

**Disaster & Emergency Management Conference**  
27 – 28 July 2026, Gold Coast, Queensland

The [2026 Disaster and Emergency Management Conference](#) will bring together sector leaders and practitioners from across Australia and New Zealand on 27– 28 July 2026. This year's theme '*The next chapter in emergency management: adapting, learning and leading*,' explores innovation, collaboration and the future of disaster resilience.

The Office of the IGEM will also be hosting a booth, so make sure to come say hello!

[Register now](#)



**Australian Disaster Resilience Conference**  
19– 21 August 2026, Victoria, Melbourne

The Australian Disaster Resilience Conference brings together people from across sectors who are working to strengthen community resilience and reduce disaster risk. Organised by the Australian Institute for Disaster Resilience, the conference is designed for anyone who

lives, works, studies or volunteers in support of communities and wants to contribute to a more resilient Australia.

Want to see more?

Learn more

Don't forget to check out our [Research Connect webpage](#) which has been developed to connect researchers with disaster managers. The Office of the IGEM will continue to grow the Research Connect webpages in collaboration with our stakeholders, and we invite your organisation to share your research content and opportunities on the platform. For more details on how to submit for the next edition, feel free to reach out to IGEM at [research@igem.qld.gov.au](mailto:research@igem.qld.gov.au).

You can also follow us on social media to stay updated with the latest news from the Office of the IGEM. Just click the links below to visit our official page.

[IGEM Facebook](#) | [IGEM LinkedIn](#)



Having trouble viewing this email? [View Online](#)