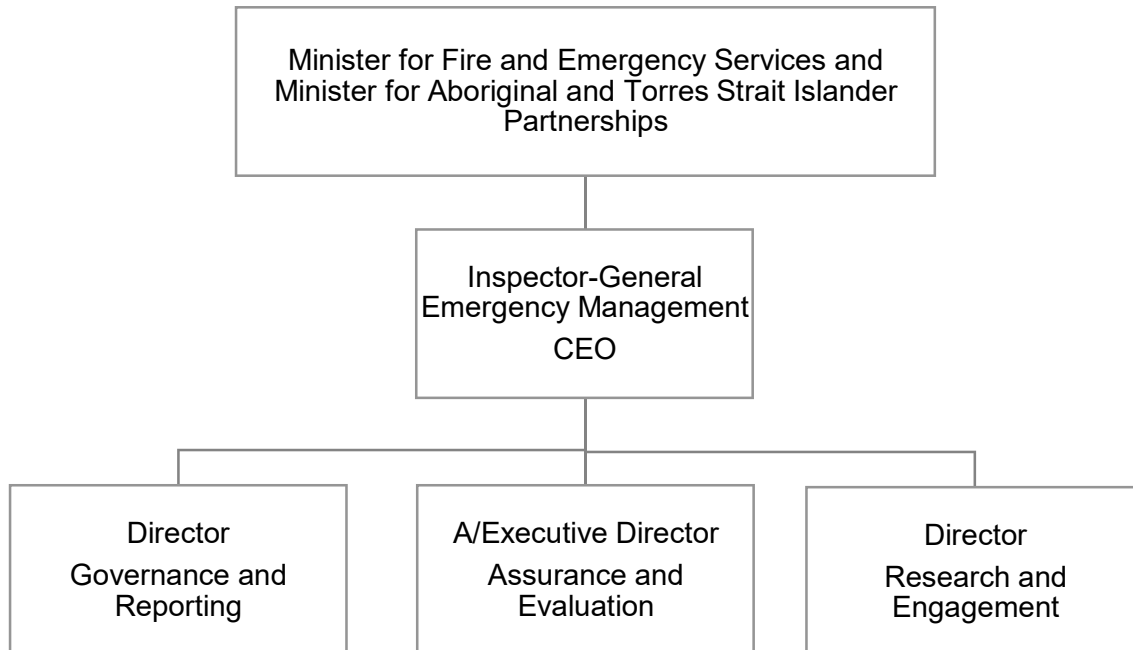


Our governance: Structure and people

Organisational structure

Activity streams

The IGEM reports to the Honourable Craig Crawford MP, Minister for Fire and Emergency Services and Minister for Aboriginal and Torres Strait Islander Partnerships.



At 30 June 2020, the Office was comprised of three key streams: Assurance and Evaluation; Research and Engagement; and Governance and Reporting.

The Assurance and Evaluation stream develops, conducts and delivers reviews, lessons, assurance and evaluation frameworks, projects and activities. This team also provides system analysis and monitoring to build stakeholder capability in disaster management and ensure compliance with the legislated functions of the Office.

The Research and Engagement stream develops, builds and delivers strategic partnerships, communication, research and engagement activities across a broad range of stakeholders. Stakeholders include all levels of government, tertiary and non-government organisations and the community.

The Governance and Reporting stream develops, coordinates and delivers internal strategy, planning, performance, reporting and governance activities for the Office.

Workforce profile

The total number of Full-Time Equivalent (FTE) employees for the Office was 22.1 as at 30 June 2020.

The Office's separation rate for permanent employees (excludes contract employees) for the period 1 July 2019 to 30 June 2020 was 6.7%.

No early retirement, redundancy or retrenchment packages were paid to employees of the Office during the period 1 July 2019 to 30 June 2020.

Further information on the Office's people is available under the 2019–20 highlights (pages 14 to 17 refer).

Executive management

Executive management committee

The Executive Management Committee (EMC) is the key leadership group for the Office, providing direction on strategic and operational issues. It ensures activities are carried out efficiently, effectively and economically in line with the Office's vision, purpose and strategic objectives.

In 2019–20, the EMC provided strategic oversight of the Office's reviews, assurance activities and key projects, and monitored risks and challenges to the operating environment.

The EMC meets monthly (unless otherwise determined by the Chair).

During 2019–20, the EMC met 11 times.

Members

Alistair Dawson APM. EMPA, MBA, GAICD, Inspector-General Emergency Management (Chair) (17 July 2019 to 30 June 2020)

The Inspector-General of Emergency Management is responsible for leading and managing the Office to provide assurance and advice to enable confidence in Queensland's disaster and emergency management arrangements.

Alistair brings over 40 years' policing experience in both London and Queensland to the role as Inspector-General. More than 38 years of Alistair's career in police and emergency management has been spent in Queensland where he attained the rank of Assistant Commissioner.

As a former Chair of the State Disaster Coordination Group, Alistair has played a lead role in coordinating the whole of government response to several complex disaster events across the state. Alistair has also been awarded the National Emergency Medal for Queensland 2010–11.

Mike Shapland MBE. MBA, A/Executive Director, Assurance and Evaluation

The Executive Director, Assurance and Evaluation is responsible for leading, directing and managing the development, implementation and delivery of key assurance and evaluation frameworks, projects and activities which are valued by stakeholders and enable improved performance, monitoring and reporting in disaster management.

Mike is a graduate of the Royal Military Academy, Sandhurst, United Kingdom. He has significant experience in emergency management in Queensland, including in counter-terrorism and chemical hazards emergency management, cyclone disaster management and pandemic planning.

Sarah March, MPsyOrg, MSc(Psychology), BA, Director, Governance and Reporting

The Director, Governance and Reporting provides informed, proactive strategic advice to the IGEM and to the Minister regarding performance, reporting, governance, policy and practice in relation to disaster management and the operation of the Office.

Sarah has more than 20 years' experience in government, having worked in a diverse range of roles in psychology, organisational development, workforce strategy and policy, governance and reporting.

Corinne Mulholland, BJourn, Director, Research and Engagement (30 September 2019 to 30 June 2020)

The Director, Research and Engagement provides informed and high-level advice to the IGEM and to the Minister regarding media, communication, strategic partnerships, research and engagement in relation to disaster management.

Corinne has over 14 years' experience working in senior roles across local and state government including in disaster management, police, corrective services and emergency services, health, media, marketing, economic development and strategic policy areas. She has extensive experience running large and highly-effective teams across state and local government.

Nicola Moore, MEd, GCBus, GDAppSc, BAppSc, A/Director, Research and Engagement (17 June 2019 to 2 August 2019)

Nicola has more than 15 years' experience as a qualified scientist and educator, working across government roles delivering policy outcomes via community and stakeholder education, engagement, participation and capability development.

Julie Molloy, BAComEd, A/Director, Research and Engagement (5 August 2019 to 27 September 2019)

Julie has more than 20 years' experience as a qualified evaluator and educator with a strong background in volunteering, community development, resilience, recovery and community and adult education.

Other committees

Further information on the PSBA and IGEM Audit, Risk and Compliance Committee can be found on page 26.

The IGEM also participated as a standing attendee in the monthly meetings of the PSBA Board of Management.